



SEDGWICK COUNTY  
ELECTRIC COOPERATIVE

currentnews

**SEDGWICK COUNTY  
ELECTRIC COOPERATIVE**

**BOARD OF DIRECTORS**

**Clint DeVore**  
President

**Cindy Foster**  
Vice President

**Rex Smith**  
Secretary/Treasurer

**Joe Baalman**  
Director

**Joe Gassmann**  
Director

**Eugene Scheer**  
Director

**Stephanie Seiler**  
Director

**Alan J. Smarsh**  
Director

**Stan Theis**  
Director

**STAFF**  
**Scott Ayres**  
General Manager/CEO

**Lora Alloway**  
Office Manager

**Kyle Pipkin**  
Line Superintendent

**CONTACT INFORMATION**

**HEADQUARTERS**  
P.O. Box 220  
1355 S. 383rd St. West  
Cheney, KS 67025  
316-542-3131  
Fax: 316-542-3943

**FROM THE MANAGER**

## Charge Your EV During Off-Peak Hours

As electric vehicles (EVs) continue to gain popularity, it's increasingly important for EV owners to understand the impact of charging during peak demand hours.

Thoughtful EV charging, particularly during off-peak hours (10 p.m. to 7 a.m.), is a win-win for EV owners through lower rates, but it also helps Kansas electric cooperatives balance their electrical load.

### WHAT IS PEAK DEMAND?

Peak demand is when electricity use is at its highest in an area, typically during busy energy-use times for homes, businesses and industries. More appliance use, business activities and even weather can create spikes in demand, making it more challenging for your electric co-op to keep the

grid stable and manage costs.

While electricity may feel unlimited when powering household devices, it's a finite resource constrained by the co-op's capacity to purchase (or produce) electricity and distribute it throughout the local grid. To serve the grid during times of peak demand, electric co-ops may need to activate additional generation resources or purchase higher-cost electricity from the market. These efforts, although necessary to maintain reliability, can



**Scott Ayres**

*Continued on page 12B ►*

## MEMBERSHIP MEETING SCHEDULED

Sedgwick County Electric Cooperative is notifying members of a special membership meeting on **OCT. 20, 2025, AT 6 P.M.** at the cooperative office, 1355 S. 383rd St. W., Cheney, Kansas 67025. The board of directors will consider and vote on changes to the Parallel Generation and Net Metering rates due to a Kansas Legislature change.

The exact wording of modifications to the Parallel Generation and Net Metering rates and proposed changes will be posted to the cooperative's website, [www.sedgwickcountyelectric.coop](http://www.sedgwickcountyelectric.coop), no later than Oct. 1, 2025.



## CHARGE YOUR EV DURING OFF-PEAK HOURS

*Continued from page 12A ►*

lead to increased expenses and put a strain on grid infrastructure.

### OFF-PEAK CHARGING: A STRATEGIC APPROACH FOR CO-OP MEMBERS

Kansas' electric cooperatives play a vital role in managing energy demand and ensuring reliable service for all members. For co-op members who own EVs, off-peak charging provides a strategic solution to help reduce strain on the grid while also lowering costs — because charging when demand is lower eases pressure on the electric grid. This helps avoid costly infrastructure upgrades and supports a more reliable, efficient system that benefits everyone in our community.

Off-peak periods — typically 10 p.m. to 7 a.m. — are times when the overall demand for electricity is lower, allowing co-ops to offer more affordable rates and incentives to shift energy consumption.

Charging your EV during off-peak hours can help you take advantage of reduced electricity, resulting in lower costs compared to charging during peak demand times. Smart scheduling means more affordable EV ownership and better energy budgeting.

### THE BENEFITS OF OFF-PEAK EV CHARGING

Off-peak charging provides a win-win solution for members and electric cooperatives by offering cost savings, improved grid reliability and environmental benefits. This practice not only enhances the appeal of EVs but also aligns with the cooperative values of reliable, sustainable and affordable energy while helping build a smarter and more efficient energy system for future generations.

## Help Us Locate the Following Members

The names listed below have capital credit refunds due to them, but we are unable to locate these former members. If you have information that would help us, contact any individual or business listed below, please call the office at 316-542-3131 or 866-542-4732.

Shelby Alashqar	Craig Galle	James A. & Cathleen
Daniel & Michele Bautista	Kathleen Goebel	M. Merseal
Daniel & Stephanie Boylan	K P Hardesty	Nathan & Melissa Neises
Michael & Carrie Branson	Carl Heincker	Mark & Lisa Nester
Matt Brayfield	Jocelyn Holmes	Brandy J. Orth
Ronald Bruggeman or	Victor P. Howell	Teresa L. Ott or Potts
Westcon Inc.	Jim E. & Jane Jestes	Contacting
Marilyn Cain	Scott Johnson	Dean & Audra Owens
Sarah Calbeck	Jerrold T. Killgore	Gary & Stephanie Perea
Christoph E. &	Carolyn J. Klein	Tracy Ropp
Natasha R. Clark	Frank Lambert	Ginger L. Sollenberger
Brandi Colbert	Michelle Ledoux	Stephanie M. Soto or LMR
Joni Evans	Gary & Sara Lies	Services Inc
Marc & Rhonda Ewertt	Anthony & Sheila Lowrie	Roger Spexarth
Heather Fayette	Trevor & Heather Mallett	Matthew Stocking
Ronald E. Focke	Sergio Martinez	Amy Sullivan
		Don & Michelle Sweet
		Garrel & Jane Trotter

## Listen for Peak Alerts and Save

This month, we are asking members to participate in Sedgwick County Electric Cooperative's Peak Control program. This voluntary program helps you save on your summer energy bills and can also help the co-op hold down wholesale power costs in the other eight months, during our off-peak period.

A major portion of our annual wholesale power bill is based on power consumed during the 3-6 p.m. demand time frame during the summer months. The price of electricity is at a premium during that three-hour window due to the "high demand" for energy production during those hot, summer hours.

### WHAT IS PEAK CONTROL?

Peak control is a voluntary program in which our members can participate to hold down electricity costs.

### HOW CAN I PARTICIPATE IN PEAK CONTROL?

You can participate by monitoring your use of electric appliances and equipment that require larger amounts of electricity during peak hours. Any steps you can take to lower your energy

use from 3-6 p.m., Monday-Friday will help control costs.

### WHEN SHOULD I PARTICIPATE IN PEAK CONTROL?

Participate when "peak alerts" are issued, typically from 3-6 p.m. weekdays from June 1 through Sept. 30. Like us on Facebook and follow us on X (formerly known as Twitter) to receive peak alerts.

The actual peak demand for June, July, August and September is the billing demand for each respective month. Special emphasis is placed during July and August, as the peak electricity demand registered by the co-op during those two months drives the demand billing for the following "off peak" eight months. Be aware of days when temperatures are forecast to be above 95 degrees. These are the types of days when peak demand can occur.

### WHAT ARE THE BENEFITS OF PEAK CONTROL?

Reducing electric usage between 3 and 6 p.m. will help reduce our peak load. Each kilowatt shaved or shifted during peak load is a cost savings for all cooperative members.

## *Sedgwick County Electric Cooperative*

# Fuels Growth of Student Leaders at Cooperative Youth Leadership Camp

**MAXIMUS MILLER**, representing Sedgwick County Electric Cooperative, recently participated in the 48th Annual Cooperative Youth Leadership Camp (CYLC) held July 11-17 near scenic Steamboat Springs, Colorado. The camp brought together 77 high school student leaders from Kansas, Oklahoma, Colorado and Wyoming, sponsored by 45 electric and agriculture cooperatives.

Miller was selected by Sedgwick County Electric Cooperative because of his exemplary leadership skills, academic excellence, involvement in extracurricular activities, and strong character as demonstrated in his application.

Throughout the weeklong camp, students gained hands-on experience in cooperative business operations by forming and managing a mock candy cooperative. They elected a board of directors, appointed a general manager, created committees, and held daily membership meetings, mirroring the real-world structure of member-owned cooperatives. Educational sessions covered

leadership development, conflict resolution, and co-op career opportunities. Highlights included electric safety demonstrations by cooperative linemen, a live raptor presentation from HawkQuest, and a tour of the Craig Power Station.

CYLC offers more than just professional growth opportunities; it fosters a sense of camaraderie and adventure. While attending, students explored the natural beauty of Mount Werner, experienced the charm of downtown Steamboat Springs, and braved the rapids of the Colorado River on a rafting trip. Recreational highlights included a volleyball tournament, swimming, a talent show and a dance.

Several students were recognized for their exceptional contributions during the camp. Issiah Melton, sponsored by Harmon Electric Cooperative, received the Exemplary Award for his positive influence. Charley Coffin, sponsored by FreeState; Cooper Springer, sponsored by 4 Rivers; and Mad-die Wiggin, sponsored by TCEC; were elected as camp ambassadors by their peers and will return to the 2026 camp as student counselors.

Following CYLC, Miller shared few reflections:

- ▶ “This camp has shown me how to be a leader and what it takes to be a leader. It helped me out of my comfort zone and to meet new awesome people.”
- ▶ “I was inspired seeing how a bunch of people that didn’t know each other can come together and overcome challenges.”
- ▶ “I wish I had known that it was going to be a fantastic experience and that I was going to meet so many wonderful people.”

“The Cooperative Youth Leadership Camp is a meaningful way to invest in the future of our communities,” said Scott Ayres, general manager/CEO at Sedgwick County Electric Cooperative. “We’re proud to support opportunities like this that help young people grow as leaders, build confidence and bring those skills back home to make a difference.”



**Max Miller**



While attending Cooperative Youth Leadership Camp, Max Miller (left) helped his group build an electric infrastructure model, explaining how power travels from a plant to our homes.



## 127 Participate in Co-op Sponsored Pedal Pull

This year 127 children participated in the pedal tractor pull at the Sedgwick County Fair with the top three winners in each age group qualifying to compete at the Kansas State Fair in Hutchinson on Sept. 7, 2025.

Sedgwick County Electric Cooperative would like to thank everyone who watched or participated. We would also like to thank Bolinger & DeVore Farms LLC, DeVore Cattle LLC, Border States Electric, Eaton Roofing & Exteriors, and Frank and Cindy Kill Farms for their prize donations.

Special thank you to the employees and board of directors who volunteered their time to help with this year's pedal pull.

**CONGRATULATIONS TO THE  
2025 PEDAL TRACTOR PULL WINNERS!**



Ava Clouse won first place in the 11/12-year-old bracket and is headed to compete at the Kansas State Fair on Sept. 7.



A crowd gathers to watch the Sedgwick County Electric Co-op Pedal Pull event.

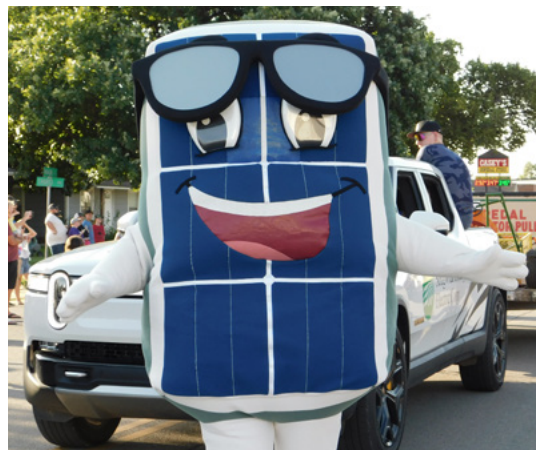


Lennox Hillman competed in the 5-year-old bracket to win second place and is headed to the state competition at the Kansas State Fair in Hutchinson.



Sedgwick County Electric Cooperative employees were joined by LED Lucy and Solar Sam in the 2025 Sedgwick County Fair parade.

## Solar Sam and LED Lucy Participate in the Sedgwick County Fair Parade



The annual Sedgwick County Fair in Cheney, Kansas, features nightly arena events, delicious food vendors, thrilling carnival rides and 4-H events. The fair kicked off July 9, 2025, with a parade. This year Solar Sam and LED Lucy walked with Sedgwick County Electric Cooperative employees and vehicles as candy was handed out to parade spectators.